

Winifred Street Flood Improvement Project Q&A

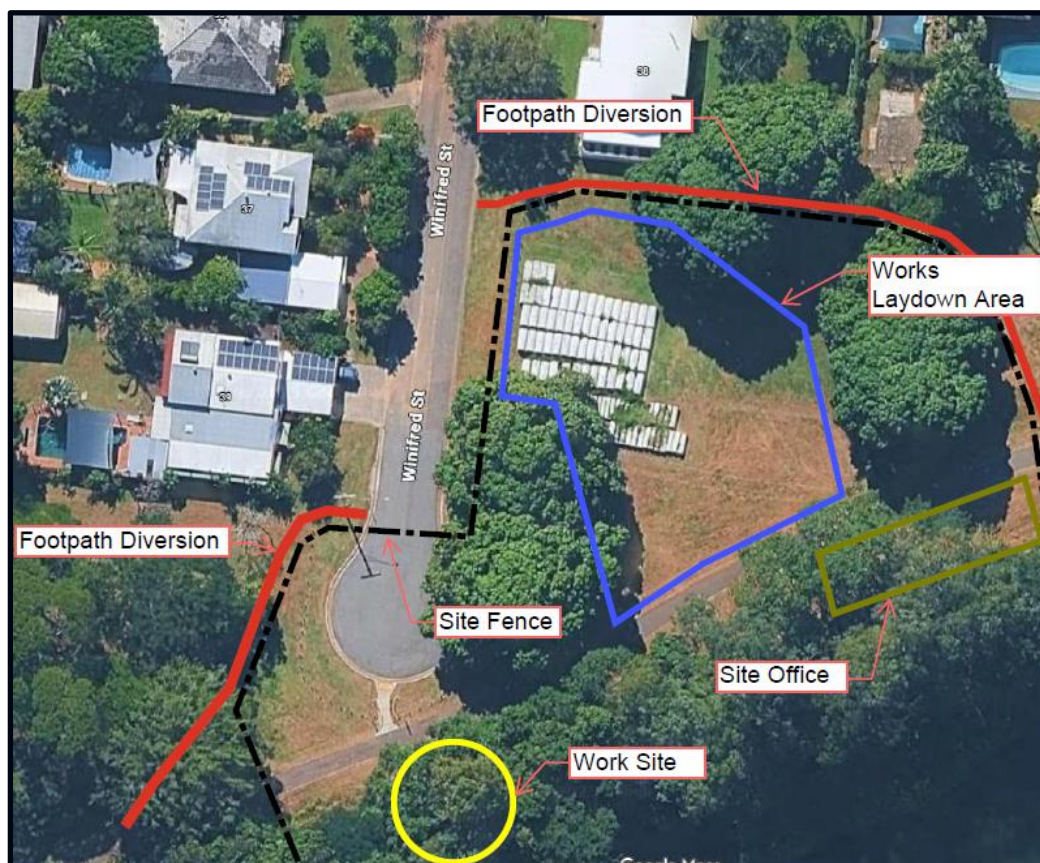
Properties in Brownhill and Winifred Streets, Mundingburra, are prone to flooding due to limited drainage capacity in the area. Several low points in the area drain to the Ross River through pipe systems, but when these pipes reach capacity, water can pool and spread to other low-lying areas. Council is planning to install additional stormwater infrastructure to increase flow to the Ross River. This upgrade will help reduce overflow and provide benefits for nearby properties and the wider suburb including Tertius Street, Kane Street and Love Lane.

Q: When was the Winifred Street stormwater system last inspected?

The crossing at the intersection of Winifred Street and Love Lane was rebuilt in August 2025. This followed an inspection in 2015, where defects were noted, including a pipe pushed through the stormwater line. The stormwater pipe system south of Brownhill Street will be exposed as part of upcoming works. This creates an opportunity for Council to inspect the pipes, clean them, and use cameras to check their condition internally.

Q: What will the diversion pathway be?

A diversion pathway is needed to keep pedestrians safely separated from construction traffic. The temporary path will run alongside the boundary of property #38 to minimise disruption for pathway users. Fencing with screening will be installed along this boundary to maintain privacy for the resident.



Q: Is there a risk that placing crushed rock in the low-lying area could redirect water toward houses? Will the rock be removed once the work is complete?

A rock hardstand has been installed between the work site and property #38 to provide space for storing materials and trucks to turn safely. Any water flow will be managed within the site, with a sump installed at the lowest point to collect water with a flow rate of 570l/min. Once this stage of work is finished, all temporary structures, including the rock, will be removed. The area will then be reshaped and replanted to look as it did before.

Q: Why have pipes been moved around?

The pipes were temporarily moved to allow construction vehicles to pass through the site, as their original position made this difficult. Once the ground improvement works are complete, the pipes can be relocated to a preferred position.

Q: What is the construction sequence and how will it impact residents?

Stage 2 will focus on outlet works. Stage 3, the final stage, will affect all residents from the Brownhill intersection through to the cul-de-sac.

Q: Are backflow prevention measures, such as a one-way valve, being considered?

The outlet sits above the Highest Astronomical Tide, so it should flow freely most of the year and won't hold water more often than residents already experience. Adding a non-return valve could create ongoing maintenance issues, such as blockages or the valve getting stuck open.

Council acknowledges the community's concerns regarding tide and backflow effects on the Winifred Street stormwater project. We want to reassure residents that backflow within the catchment were carefully considered during the development of this solution, which was designed to achieve the most reasonable and beneficial outcome for the affected community.

The inundation at the Brownhill and Winifred Street intersection was confirmed to have occurred during the 2019 event, when a rare combination of heavy rainfall and dam releases led to unexpected flooding in downstream catchments. This event was extraordinary in nature and fell outside the scope of traditional flood modelling methods and procedures.

Typically, flood modelling focuses on rainfall across catchments combined with coincidental flood levels in receiving waters. As the 2019 event was a one-off occurrence, rather than a recurring or frequent issue, it does not provide sufficient justification for the installation of a backflow prevention device.

Q: How will drainage from the open space be managed?

This is managed by a new connection to the underground drainage system. It was added because there's a low spot in the park that tends to hold water, and the cycleway acts like a barrier, stopping the river from spilling over its bank.

Q: What pavement (road surface) work is to be undertaken?

Council will improve the road surface across the project area. This includes fully rebuilding the section over the new pipe and giving the rest a light resurface to smooth and strengthen it. Winifred Street will have patch repairs, and the roads from Swales Street to Love Lane and Love Lane to Brownhill Street won't be changed.

Q: How will the kerb be affected?

Some sections of the kerb are being replaced, particularly near the new kerb inlet pits and alongside the park area.

Q: How many additional stormwater drainage pits are being installed?

A total of 7 new pits will be added.