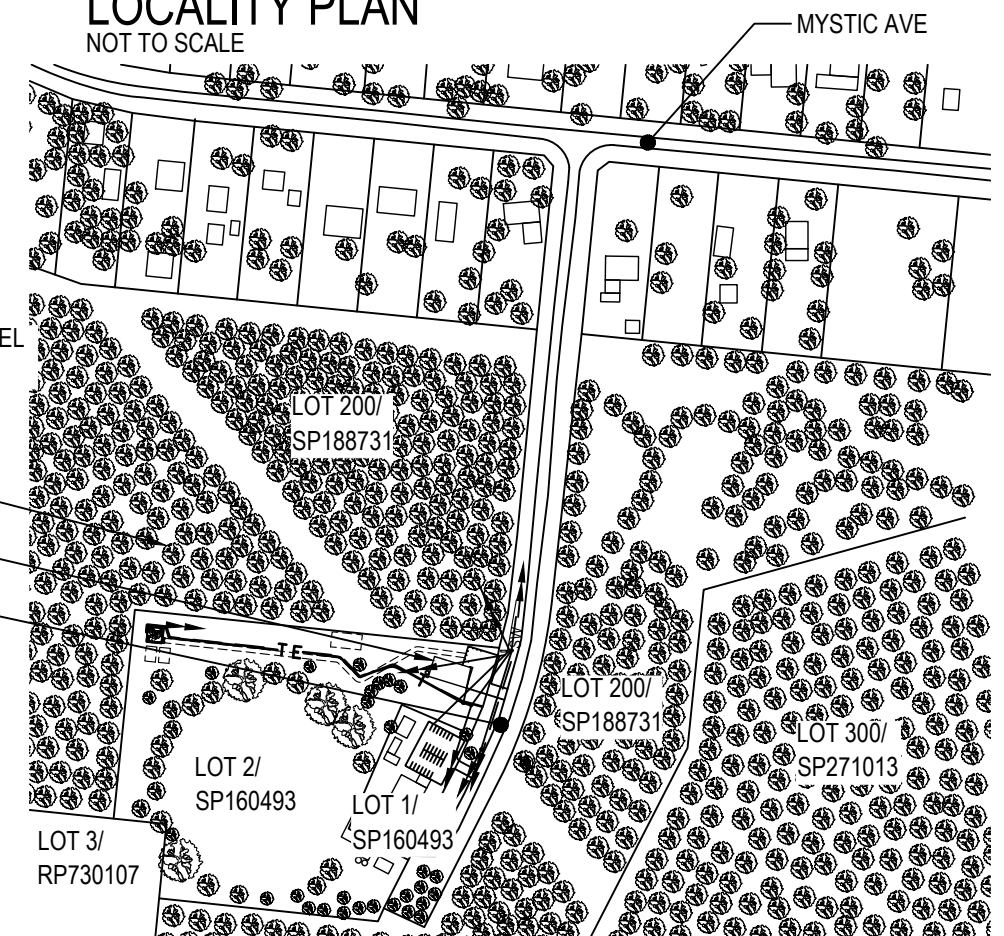


Copyright © Whereis® Registered Trademark of Sensis Pty Ltd.

## LOCALITY PLAN

NOT TO SCALE



## SITE ACCESS

SCALE 1:5000

50m 0 50m 100m 150m 200m 250m SCALE 1:5000

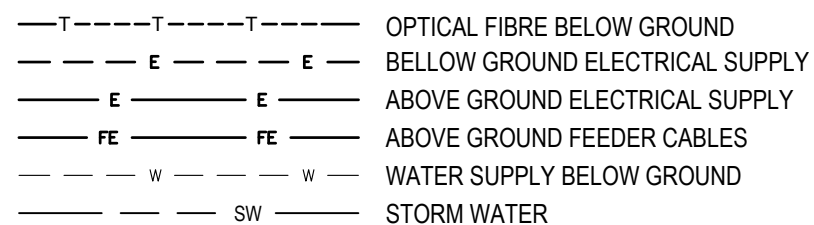
7 **PRELIMINARY**

NOTES:

1. THIS DRAWING SET IS A PRELIMINARY DRAWING ONLY AND IS ISSUED FOR COMMENT. IT IS NOT A DETAILED SURVEY/STRUCTURAL DRAWING AND THEREFORE COULD BE SUBJECT TO CHANGE.
2. ALL DIMENSIONS ARE IN MILLIMETRES UNLESS SPECIFIED OTHERWISE.
3. BUILDING CONTRACTOR SHALL CONFIRM SUITABLE CONSTRUCTION SET UP AREAS AND ENSURE RELEVANT PERMITS ARE IN PLACE PRIOR TO STARTING WORKS.

4. POWER PITS ARE REQUIRED AT EACH CHANGE OF DIRECTION OF THE ELECTRICAL CABLE TO FACILITATE CABLE HAULING.


## SERVICES LEGEND



TO BE READ IN CONJUNCTION WITH SHEETS S1-1, S3 & S7.

ORDER	DRAWN	CHKD	AMENDMENT	EXAM	APPD	DATE	ISS
BTS-19940	JM	MD	PRELIMINARY - SP80002584WO053BMM	PE	KB	27.01.25	1
BTS-19940	JM	MD	PRELIMINARY - REVISED POLE AND HEADFRAME	BC	KB	31.03.25	2

©Amplitel PTY LTD as Trustee for the Towers Business Operating Trust (ACN 086 174 781) All rights reserved.

S 2	<div><div>AMPLITEL</div><div>Part of the Telstra Group</div></div>		
	TOWER AMS SITE REF QLD008076 BALGAL BEACH SITE LAYOUT AND ACCESS		
	44 COMMUNITY CRESCENT, BALGAL BEACH, QLD 4816		
	DWG NO.	QLD008076	SHT NO. S1

PROPERTY DESCRIPTION	SITE STRUCTURE CO-ORDINATES (GDA94) GPS READING ACCURACY: ± 10m CENTRE OF POLE	
	LATITUDE	-19.04368° (GDA 94)
	LONGITUDE	146.40739° (GDA 94)
PART OF LOT 2 ON SP160493		







SERVICES LEGEND

- T

T

T

OPTICAL FIBRE BELOW GROUND
- E

E

E
- BELLOW GROUND ELECTRICAL SUPPLY

FE

FE

FE

ABOVE GROUND FEEDER CABLES

NOTES:

1. THIS DRAWING SET IS A PRELIMINARY DRAWING ONLY AND IS ISSUED FOR COMMENT. IT IS NOT A DETAILED SURVEY/STRUCTURAL DRAWING AND THEREFORE COULD BE SUBJECT TO CHANGE.
2. ALL DIMENSIONS ARE IN MILLIMETRES UNLESS SPECIFIED OTHERWISE.
3. POWER PITS ARE REQUIRED AT EACH CHANGE OF DIRECTION OF THE ELECTRICAL CABLE TO FACILITATE CABLE HAULING.

- E.L. 41.5m (±100mm)

APPROXIMATE TOP OF STRUCTURE

E.L. 40.0m (±100mm)

TOP OF MONOPOLE

C/L PROPOSED TELSTRA ANTENNAS (10 OFF, BY OTHERS) AND ANCILLARIES (BY OTHERS)

PROPOSED TELSTRA TWIN-LEVEL, CLIMBABLE HEADFRAME (BY OTHERS)

PROPOSED TELSTRA FEEDER CABLES TO RUN INTERNAL TO MONOPOLE AND IN EXTERNAL CABLE LADDER (BY OTHERS)
- PROPOSED TELSTRA 450 WIDE CABLE LADDER STRAPPED TO MONOPOLE (BY OTHERS)

FUTURE OTHER CARRIER SHELTER (BY OTHERS)

PROPOSED ELEVATED TELSTRA EQUIPMENT SHELTER WITH CONCRETE STEP (BY OTHERS)

PROPOSED TELSTRA GPS ANTENNA (1 OFF, BY OTHERS)

PROPOSED AMPLITEL 2.4m HIGH SECURITY FENCE WITH 3.0m WIDE DOUBLE ACCESS GATE
- PROPOSED AMPLITEL 40m HIGH MONOPOLE WITH CLIMBING LADDER

PROPOSED TELSTRA 600mm WIDE ELEVATED CABLE LADDER (BY OTHERS)

PROPOSED JABAC PRODUCT CODE TERH4311-M & TERH270-M FIXED TO MONOPOLE

FUTURE OTHER CARRIER ODU (BY OTHERS)

PROPOSED AMPLITEL BRANDED SIGNAGE JABAC PRODUCT CODE TEMC2005-M TO BE INSTALLED ON COMPOUND ACCESS GATE

E.L. 0.5m (±100mm)

BASE OF SHELTER (BY OTHERS)

E.L. 0.0m (±100mm)

GROUND LEVEL

PROPOSED TELSTRA U/G SUBMAIN APPROX. 230m. (CONDUIT BY AMPLITEL, CABLE BY TELSTRA). REFER NOTE 3

PROPOSED AMPLITEL MONOPOLE FOUNDATION (SHOWN INDICATIVELY)
- PROPOSED TELSTRA FIBRE PIT (BY OTHERS)

PROPOSED TELSTRA U/G FIBRE ROUTE (TBC, BY OTHERS)

PROPOSED TELSTRA POWER PIT
- SOUTH ELEVATION
- SCALE 1:150

3m

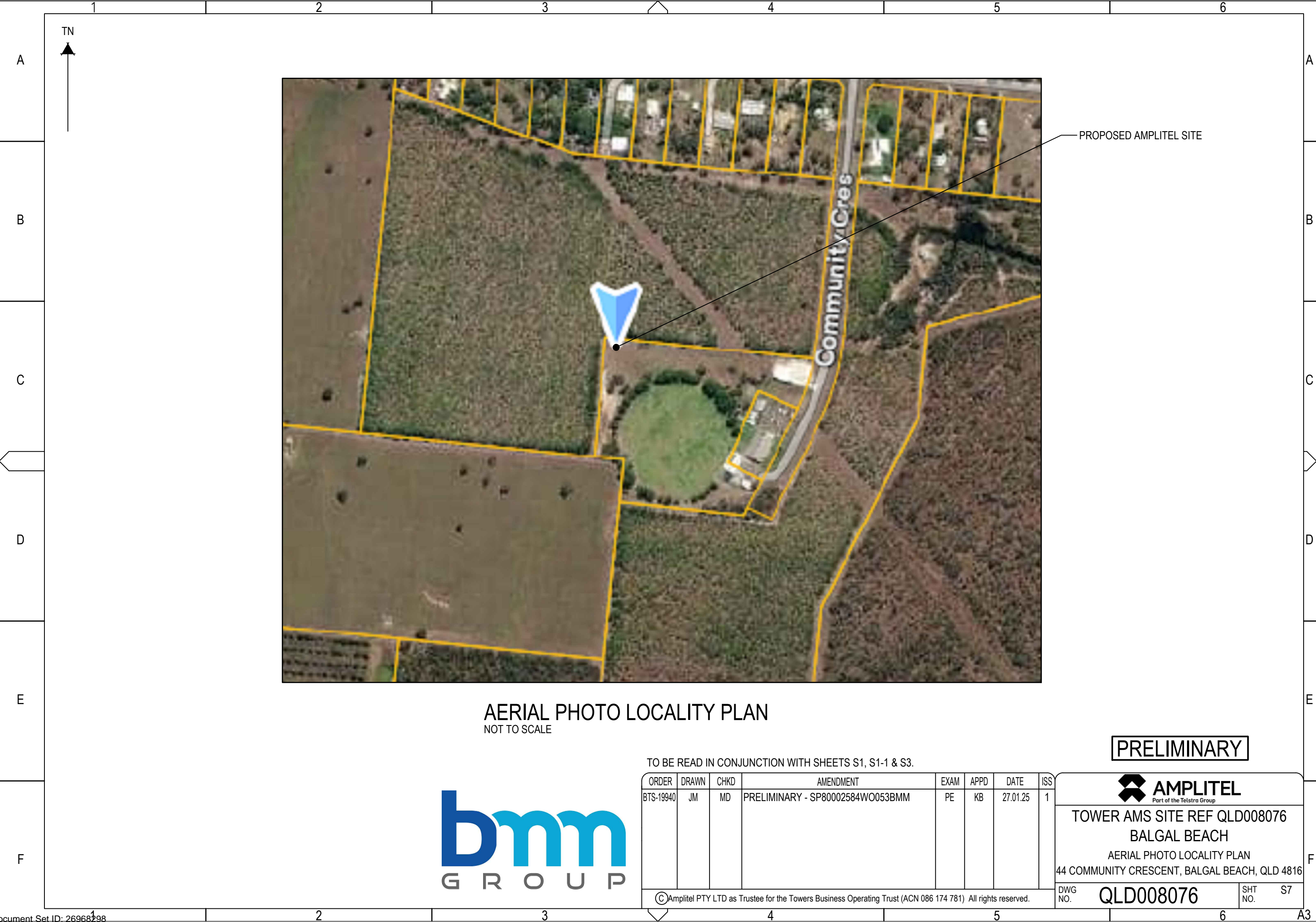
0

3m

6m

SCALE 1:150
- TO BE READ IN CONJUNCTION WITH SHEETS S1, S1-1 & S7.
- | ORDER     | DRAWN | CHKD | AMENDMENT                                | EXAM | APPD | DATE     | ISS |
|-----------|-------|------|--|------|------|----------|-----|
| BTS-19940 | JM    | MD   | PRELIMINARY - SP80002584WO053BMM         | PE   | KB   | 27.01.25 | 1   |
| BTS-19940 | JM    | MD   | PRELIMINARY - REVISED POLE AND HEADFRAME | BC   | KB   | 31.03.25 | 2   |

© Amplitel PTY LTD as Trustee for the Towers Business Operating Trust (ACN 086 174 781) All rights reserved.
- 
- Part of the Telstra Group
- TOWER AMS SITE REF QLD008076
- BALGAL BEACH
- SOUTH ELEVATION
- 44 COMMUNITY CRESCENT, BALGAL BEACH, QLD 4816
- DWG NO.
- QLD008076
- SHT NO.
- S3
- 
- 
- Document Set ID: 26968298  
The copyright and ownership of this drawing is assigned to Amplitel and must not be copied or saved elsewhere without written permission from Amplitel.  
Version: 1, Version Date: 08/04/2025



AERIAL PHOTO LOCALITY PLAN  
NOT TO SCALE



TO BE READ IN CONJUNCTION WITH SHEETS S1, S1-1 & S3.

ORDER	DRAWN	CHKD	AMENDMENT	EXAM	APPD	DATE	ISS
BTS-19940	JM	MD	PRELIMINARY - SP80002584WO053BMM	PE	KB	27.01.25	1

© Amplitel PTY LTD as Trustee for the Towers Business Operating Trust (ACN 086 174 781) All rights reserved.

PRELIMINARY



TOWER AMS SITE REF QLD008076  
BALGAL BEACH  
AERIAL PHOTO LOCALITY PLAN  
44 COMMUNITY CRESCENT, BALGAL BEACH, QLD 4816

DWG NO. **QLD008076** SHT NO. **S7**