



FRINGE HUB VENUES

The Northern Fringe Festival is back in 2021 after the successful participation in the inaugural 2019 event.

The focus of the festival this year is to raise its profile and attract more arts groups to show and provide easier access to quality art, including national and international acts. We look forward to seeing what new and innovative productions register to be part of the 2021 festival.

In 2019 the festival hosted venues such as The May Wirth, The Empire Theatre and the Wonderland Spiegeltent. These venues and more will be back in 2021, and artists/events can now register their interest to perform in these venues.

The Fringe Hub Venues are hosted and programmed by the Northern Fringe Festival, and artists/events programmed in will be contracted under a box office split agreement.

Please see below for the Fringe Hub Venues available in 2021 and their venue details.

KEY DATES

01 DEC 2020	Fringe Hub Registrations Open
22 JAN 2021	Fringe Hub Registrations Close
03 FEB 2021	Successful or unsuccessful notification





WONDERLAND SPIEGELTENT

DESCRIPTION

The Wonderland SpiegelTent first came to Townsville for Festival 2018, was back in 2019 at Strand Park for the North Australian Festival of Arts and Northern Fringe Festival and will return in 2021.

It is a unique venue, with 'SpiegelTent' being Dutch for mirror tent. With this historic European setting which comes complete with stained glass windows and mirrors, it is an exciting venue to host your event.

DATES OPEN

02 JUL 2021 – 25 JUL 2021

LOCATION

Strand Park, North Ward

CAPACITY

350 maximum

STAGE DIMENSIONS

- 2.4m at the front x 5.7m at the rear Trapezoid shape stage 5.4m deep
- 5m round stage (needed for ariels)

VENUE DETAILS

- People with Disability (PWD) accessible
- Combination of booths and single chairs
- Some seats will have slight obstructed view
- Aerials available upon negotiation





THE MAY WIRTH

DESCRIPTION

The May Wirth is your classic circus big top tent that is perfect for events looking for that little extra something. It first came to Townsville in 2019 at both Strand Park and Queens Gardens for the North Australian Festival of Arts and Northern Fringe Festival.

DATES OPEN

02 JUL 2021 – 25 JUL 2021

LOCATION

Strand Park, North Ward

CAPACITY

300 maximum

STAGE DIMENSIONS

- 10m deep x 7m deep
- 0.7m crossover
- Stairs down to backstage and into the audience

VENUE DETAILS

- PWD accessible
- There are two 'king poles' that create the peak of the tent
- Some seats will have slight obstructed view
- Seating is tiered front on with 3 – 4 rows on the ground
- Aerials available upon negotiation





EMPIRE THEATRE

DESCRIPTION

The Empire Theatre is a slightly more intimate venue still with the ability for ariels. It first came to Townsville in 2019 at Queens Gardens for the North Australian Festival of Arts and Northern Fringe Festival and will return in 2021.

DATES OPEN

22 JUL 2021 – 25 JUL 2021

29 JUL 2021 – 1 AUG 2021

LOCATION

Queens Gardens, North Ward

CAPACITY

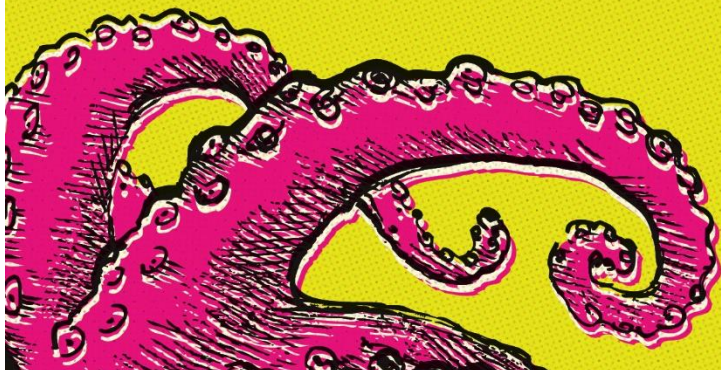
220 maximum

STAGE DIMENSIONS

6m wide x 4m deep

VENUE DETAILS

- PWD accessible
- Seating will be straight on at ground level
- Aerials available upon negotiation





PINOCCHI'S PALACE

DESCRIPTION

Pinocchi's Palace is a new festival hub venue for the Northern Fringe Festival 2021. Designed with our mascot Pinocchi in mind, this intimate tent is perfect for a range of Fringe Artists and their events allowing for a smaller crowd and ensuring that a "SELL OUT" season can be achieved.

DATES OPEN

22 JUL 2021 – 25 JUL 2021

29 JUL 2021 – 1 AUG 2021

LOCATION

Queens Gardens, North Ward

CAPACITY

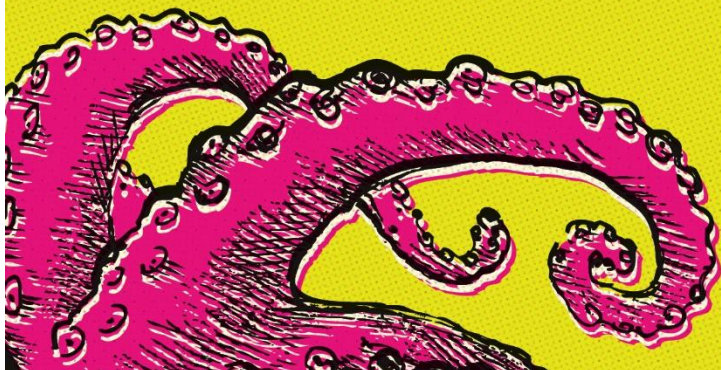
50 maximum

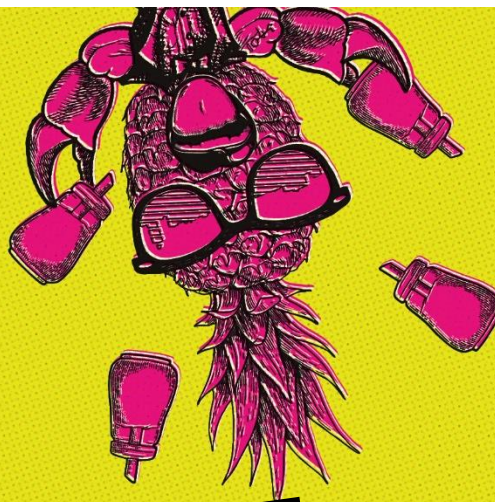
STAGE DIMENSIONS

4m wide x 3m deep x 0.4m high

VENUE DETAILS

- PWD accessible
- Seating will be straight onto the stage at ground level





THE BUNGALOW PALM

DESCRIPTION

The Bungalow Palm is a new festival hub venue for the Northern Fringe Festival 2021. This intimate tent is perfect for a range of Fringe Artists and their events allowing for a smaller crowd and ensuring a "SELL OUT" season can be achieved. This venue will be perfect for one man shows, comedy, theatre, magic etc.

DATES OPEN

22 JUL 2021 – 25 JUL 2021

29 JUL 2021 – 1 AUG 2021

LOCATION

Queens Gardens, North Ward

CAPACITY

20 maximum

STAGE DIMENSIONS

2.4m wide x 1.2m deep x 0.4m high

VENUE DETAILS

- PWD accessible
- Seating will be straight onto the stage at ground level

